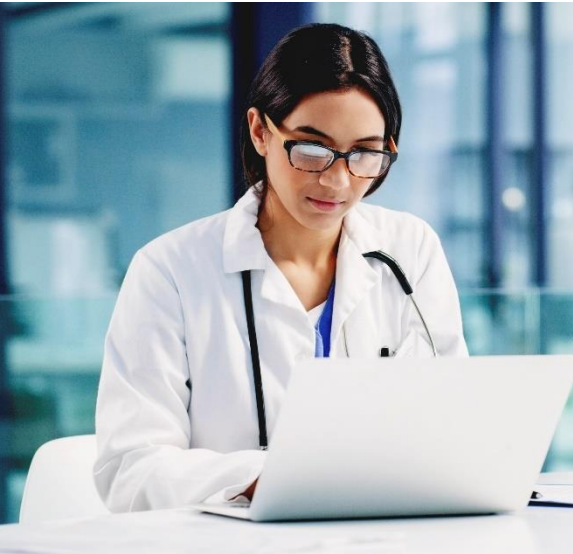


# EMTALA Compliance Analysis

Be prepared for unannounced survey activity, and maintain continuous EMTALA compliance.



## Our experts are here to help

Our team of accreditation advisors have experience as EMTALA surveyors, emergency department and labor and delivery operations, and organizational support for continuous survey readiness. Our experts are available to work with you to assess current compliance, identify opportunities for improvement in processes and/or education, support your organization post EMTALA survey, and ensure that the organization has all the tools necessary to maintain continuous EMTALA readiness.

## How prepared are you for an EMTALA survey?

The Emergency Medical Treatment & Labor Act (EMTALA) provides an important means of improving access to healthcare and patient safety. Ensuring your healthcare organization is in compliance with EMTALA regulations at all times is imperative. Having the support and knowledge of compliance experts to provide guidance and recommendations can help relieve the burden of this additional work.

Vizient's Accreditation team of experts can prepare and support your organization, pre- and post-survey, with a proactive review of EMTALA-specific records and organizational documents, staff and provider interviews, and revisit preparations, ensuring your organization is in compliance and survey ready.

## EMTALA Compliance Assessment

Having a comprehensive baseline assessment in place will ensure organizational readiness for any unscheduled survey activity. Vizient Regulatory and Accreditation Services can help you with EMTALA compliance by providing:

- A comprehensive assessment of your current compliance with EMTALA regulations, either proactively or as a supportive review of an active plan of correction prior to a survey revisit
- Onsite staff mentoring and education by a nurse accreditation advisor with experience in EMTALA, emergency care, patient safety, and regulatory compliance
- A review of records, logs, policies, and education to include recommendations for improvement to assure compliance with the standards
- Support post live survey with plans of corrections, education and monitoring of compliance, and revisit preparations

## Vizient Regulatory and Accreditation Advisory Services

EMTALA Compliance Analysis is a component of the Vizient Regulatory and Accreditation Services, supporting patient safety through accreditation and regulatory compliance including gap assessments, education, coaching and solution implementation.



To learn more, please contact  
Allison McDonald at  
[allison.mcdonald@vizientinc.com](mailto:allison.mcdonald@vizientinc.com).

As the nation's largest member-driven healthcare performance improvement company, Vizient provides solutions and services that empower healthcare providers to deliver high-value care by aligning cost, quality and market performance. With analytics, consulting and a robust sourcing portfolio, we help healthcare organizations improve patient outcomes and lower costs.